



Massachusetts Marine Educators



# Marine

# Art



2012  
Contest



2012 THEME

Amazing  
Ocean  
Creatures  
of Stellwagen Bank  
National Marine  
Sanctuary

GRADES K - 12  
DEADLINE: APRIL 26, 2012

2012 - 20th Anniversary of Stellwagen Bank National Marine Sanctuary



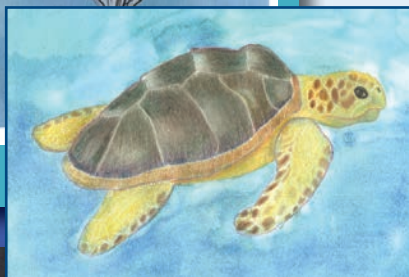
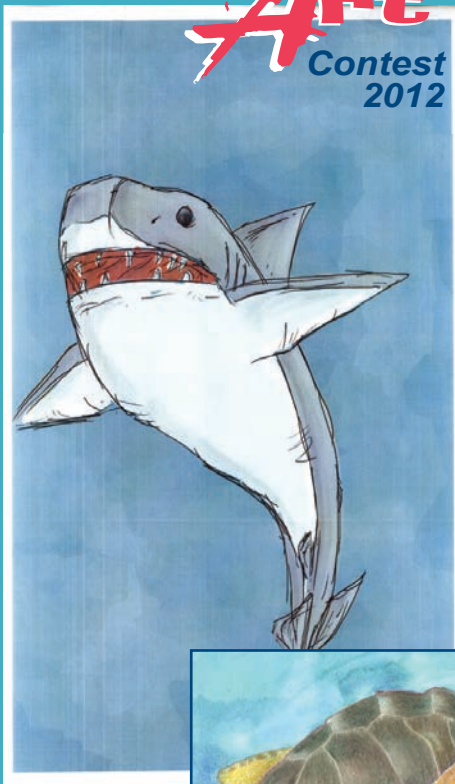
# Massachusetts Marine Educators



## Marine

# Art

Contest  
2012



## ATTENTION:

**Art and Graphic Arts Teachers  
Marine Science & Biology Teachers  
Elementary Classroom Teachers  
After-School Leaders  
Home School Instructors  
Students**

ART CREDITS: Page 1: Ian Masters, Plymouth South HS, grade 10, Wolffish; Erik Z., Bridge School, Lexington, grade 4, Mako shark; Lucas Cantwell, Plymouth South HS, grade 12, Puffin plus; Emily Messina, Plymouth South HS, grade 12, Winter skate. Page 2: Tyler Currier, Provincetown HS, grade 12, White shark; Henry P., Homeschool, grade 3, Loggerhead turtle; Kendra Walters, Plymouth South HS, grade 10, Squid; Megan D., Marshall Simonds MS, Burlington, grade 6, Atlantic white-sided dolphin. Page 3: Kathryn Hoar, Plymouth South HS, grade 11, Blue Lobster; Justin M., Antioch School, Fall River, grade 5, Harbor seal; Shannon Paull, Plymouth South HS, grade 12, Sea stars. Page 4: Kiana Suchecki, Nauset Regional HS, N. Eastham, grade 10, Horseshoe crab; Agathe P., Ecole Jean-Jacques Rousseau, France, grade 4, Tern.

## THEME: Amazing Ocean Creatures of Stellwagen Bank National Marine Sanctuary

Stellwagen Bank National Marine Sanctuary, a marine protected area located between Cape Ann and Cape Cod at the mouth of Massachusetts Bay, is an ocean wilderness near an urban world filled with amazing marine life. A diversity of sea creatures reside in the sanctuary and the greater Gulf of Maine, ranging from tiny one-celled diatoms to enormous humpback whales. Students are encouraged to create artistic interpretations of these local species.

**Please make sure that the animals illustrated are truly Stellwagen Bank National Marine Sanctuary species. Artwork representing species that cannot be found in the sanctuary will be disqualified.**



Massachusetts Marine Educators (MME) is a grass roots organization of teachers, informal educators, students, educational institutions, and others dedicated to the goals of developing a marine literate society and promoting awareness of the ocean world by integrating marine studies into existing curricula. For more information, visit the MME Web site at: <http://www.massmarineeducators.org>



# Massachusetts Marine Educators



## General Information

There are FIVE divisions in the contest — grades K-4, grades 5-8, grades 9-12, an open scientific illustration division (K-12), and an open computer graphics division (K-12) with a winner, second and third place selected from each division. Winning entries will be posted on the Stellwagen Bank National Marine Sanctuary website <http://stellwagen.noaa.gov> used by the sanctuary and MME in their outreach programs. Notification and certificates will be sent to the participating teachers or individual students at their schools. Entry deadline is April 26, 2012.

## Basic Requirements

- The entries should be between 8.5" x 11" and 18" x 24".
- Use white (recommended), non glossy paper; do not laminate.
- Teachers may send in as many entries as they like, but selective screening would be appreciated.
- Label each entry on the back with student's name, age and grade, along with the teacher's name, school name, address and telephone number or use the official entry form.

## Grades K-4

Students are to create a poster/artwork that relates to this year's theme. Students should include on the back of the poster or on the entry form the name of the animal in the image.

## Grades 5-8 and 9-12

Students are to create posters/artworks that meet this year's theme. The student must include on the back of the image (or attach the official entry form) with information about the art — what species or group of animals is illustrated (common and scientific names), and a short statement about the interesting characteristics of that animal. (Be sure that lettering does not show through the illustration; a separate but attached sheet is preferred -- no staples please.)

## Scientific Illustration

### (all grades)

Students should strive for technical accuracy in their art. Illustrations may be of single animals (e.g., diatom, copepod, squid, herring, etc.) or a group of animals. Artwork may be based on microscope studies, field observations, dissections, or photographs. High school biology and marine science students are encouraged to submit entries, as are students in art classes. Students should attach a brief statement about the process of developing the illustration and the common and scientific name(s) of the animal(s) pictured.

## Computer Graphics and Photos

### (all grades)

Students may use any computer graphics software program to develop original computer art or to manipulate images from outside sources. If using photographs or artwork from other artists, please state the source of the original images. Students should also write a brief statement about the animal(s) in the artwork.

### ALTERNATE THEME:

Entrants in this division may focus on the alternate theme of "2012 - 20th Anniversary of Stellwagen Bank National Marine Sanctuary." These pieces may be used to publicize sanctuary anniversary events. Please submit a printed version of the art with the entry form and enclose a CD or email a graphics file (.jpg, .tif or .pdf) to [anne.smraina@noaa.gov](mailto:anne.smraina@noaa.gov). Teachers may combine all artwork on one CD (preferred).

## Judging

Entries will be judged on creativity, factual accuracy, artistic presentation, neatness, and relevance to the theme. Grades K-4, 5-8 and 9-12, scientific illustration and computer graphics will be judged separately.

## Prizes

**Grand Prize:** 4 whale watch tickets from Dolphin Fleet of Provincetown.

**First Place** (all categories): \$25 cash award, 4 passes to the New England Aquarium, and Certificate.

**Second Place** (all categories): \$15 cash award, 2 passes to the NE Aquarium, and Certificate.

**Third Place** (all categories): \$10 cash award, 2 passes to the New England Aquarium, and Certificate.

**Honorable Mention:** Certificate.

## Entry Deadline: April 26, 2012



## Questions

For more information about the contest, call 781-545-8026 ext. 204 or email [anne.smraina@noaa.gov](mailto:anne.smraina@noaa.gov)

To find out more about marine life in the sanctuary and the Gulf of Maine, visit these web sites:

**Stellwagen Bank National Marine Sanctuary**  
<http://stellwagen.noaa.gov>

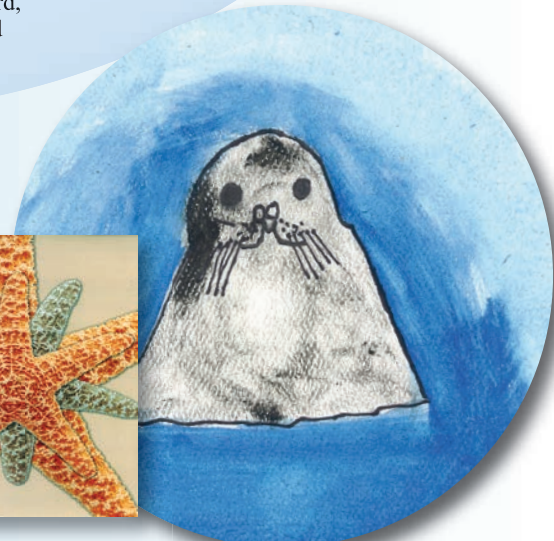
**New England Aquarium Teacher Resource Center**  
<http://www.neaq.org>

**Census of Marine Life**  
<http://www.usm.maine.edu/gulfmaine-census>

**Provincetown Center for Coastal Studies**  
<http://www.coastalstudies.org>

## Send entries to:

**MME Art/Poster Contest**  
c/o Anne Smrcina  
Stellwagen Bank  
National Marine Sanctuary  
175 Edward Foster Road  
Scituate, MA 02066



# Entry Form

# Marine Art Contest 2012

Send entries to:  
MME Art/Poster Contest  
c/o Anne Smrcina  
Stellwagen Bank  
National Marine Sanctuary  
175 Edward Foster Road  
Scituate, MA 02066

**DEADLINE: April 26, 2012**



STUDENT'S NAME: \_\_\_\_\_

AGE: \_\_\_\_\_ GRADE: \_\_\_\_\_

TEACHER'S NAME: \_\_\_\_\_

TEACHER'S EMAIL: \_\_\_\_\_

SCHOOL: \_\_\_\_\_

SCHOOL ADDRESS: \_\_\_\_\_

\_\_\_\_\_

SCHOOL PHONE NUMBER: \_\_\_\_\_

Submission of this entry gives the sponsoring organizations all rights to use the artwork for non-commercial purposes. Entry grants permission to use the (high school) student's name in press releases and web pages announcing results of the contest and in any use by the sponsoring organizations of the artwork in their publications and web sites. For grades K-8, students will be identified by school and first names/last initials only. Artwork becomes the property of MME, but teachers may contact the contest director to arrange for return of the art.



Details about the art (as specified in contest rules): \_\_\_\_\_

\_\_\_\_\_

\_\_\_\_\_

\_\_\_\_\_

\_\_\_\_\_

Each year MME selects a few entries to become part of its marine art product line. Proceeds from these sales go to MME student scholarships and prizes. Artists of selected works will be contacted directly with information about this program.

